

RALEIGH/MORRISVILLE
CREEDMOOR
JACKSONVILLE/WILMINGTON
FAYETTEVILLE
GREENSBORO

919-388-9878
WWW.YARDNIQUE.COM

YARD-NIQUE, INC.

Established 1997



NOW IS THE TIME!

With cooler weather fast approaching, it is time to think about your outdoor landscape care. This past summer Fescue turf fared better than previous years past; however, it is recommended to aerate, seed and fertilize your lawn every fall to help the turf recover. It is best to use a balanced starter fertilizer ratio of 16-25-12 or a similar combination of N-P-K and seed with a Tall Fescue Blend. With the recent outburst of cooler weather Yard-Nique's Fall renovation program is underway.

In the upcoming weeks we will be addressing the following landscape items:

- Changing seasonal color out. Fall annuals will make it through the winter and hold color until the spring.
- Final pruning of plant material is starting. This does NOT include any plants that will flower in the spring. Those plants have already set blooms for next year. All pruning will be completed in time for the plants to harden off in preparation for the winter months.
- Bermuda turf will receive a fertilizer application similar to a 0-0-7 ratio with a pre-emergent product for winter annual weeds. The idea for this fertilizer is to not promote green leaf tissue but to promote root and cell development as the plant heads into winter. The pre-emergent is essential in controlling the winter weeds that may come up as temperatures rise above normal in the winter.
- Leaf removal will be underway in the upcoming weeks. This will be completed weekly during the normal weekly maintenance service. Larger leaf accumulations will be collected by our detail crew and vacuum truck as needed.
- Late fall (approximately 7-8 weeks) after aeration and seeding, a winter fertilizer will be applied to Tall Fescue lawns that is high in Nitrogen (28-0-3) or a similar ratio for early spring green up

All the projects above can help you, as a homeowner in your own yard if Yard-Nique is not your landscape provider.



IRRIGATION SYSTEM WINTERIZATION

With the cooler temperatures approaching, the time is now to start to winterize your irrigation system. Winterizing will help prevent freeze damage to your backflow device as well as the irrigation system. Your irrigation system should be winterized before temperatures begin to fall towards the freezing mark. A single overnight freeze will generally not cause damage, but several days below freezing will increase the chance of a backflow cracking if it is not winterized. If an unexpected single night freeze is expected you can wrap your backflow in towels or a blanket to help reduce the chance of freeze damage. Should you need assistance in winterizing your backflow and Yard-Nique is not your landscape provider please call us to schedule an appointment. Yard-Nique's irrigation technicians are backflow certified and can handle all annual inspections.

MS 150

Yard-Nique recently completed their 5th MS 150 as a team of 24 riders. This year the team led by Captain Brian DuMont (President of Yard-Nique) raised over \$20,000.00.



The National Multiple Sclerosis Society will use funds collected from the MS Bike Tour to not only support research for a cure tomorrow, but also to provide programs which address the needs of people living with MS today. Because we can fight this disease by simply riding a bike, because we have chosen to help thousands of people through a contribution to the MS Bike Tour, we are now getting closer to the hour when no one will have to hear the words, "You have MS."



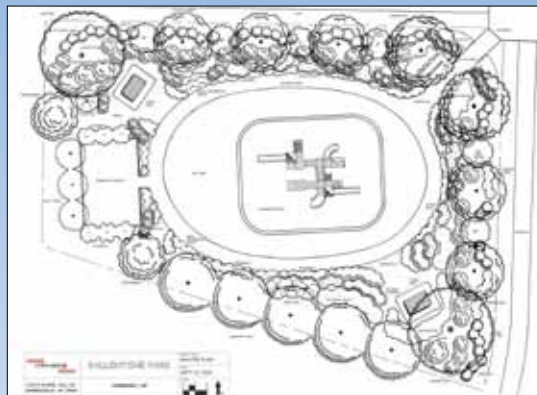
BEAUTIFUL OUTDOOR LIVING SPACES

Fall is a great time to get out and enjoy your own landscape. Whether sitting on your patio with family and friends grilling your favorite foods or relaxing by the fire on a cool evening, let us help you create an amazing outdoor oasis.

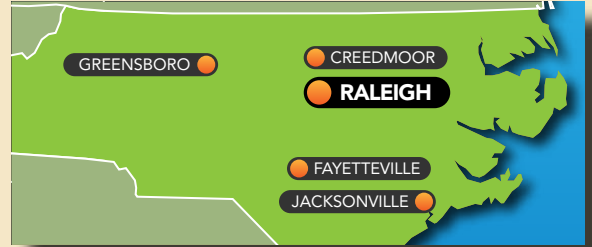


LANDSCAPE DESIGN SERVICES

Yard-Nique can provide you or your community with a wide array of landscape design services. With a full-time in-house landscape designer with a Degree in Horticulture Science, Landscape Concentration from NCSU. Our design team stays up to date with the latest industry certifications ensuring that you are getting the best possible end result. From a small scale renovation of garden spaces, high-end backyard retreats, community gardens/parks, and even entry monuments for neighborhoods or business parks. These services are offered at no additional cost to our HOA's and commercial accounts. These services can also be included as part of a wide range of residential projects when Yard-Nique is the installer.



With nearly 15 years of service in North Carolina and a highly skilled staff of over 200 employees, Yard-Nique is able to respond to any landscape need. Our professional staff is prepared to assist you with design services, new installations, renovations and ongoing maintenance. Whether your job is a SMALL residential renovation project or a MAJOR commercial site, we deliver high quality and honest service at a fair and competitive price.



LANDSCAPE
DESIGN, BUILD,
AND MAINTAIN



LANDSCAPE
INSTALLATION
AND TURF
MAINTENANCE



IRRIGATION
SYSTEMS AND
OUTDOOR
LIGHTING



HARDSCAPING
AND OUTDOOR
LIVING SPACES

