



Fall 2015

MAINTENANCE PROGRAM

October

- Bermuda Turf: Continue liquid pre-emergent and herbicide application
- Fescue Turf: Complete aeration and seeding program. Touch-up any areas with seed as needed. Begin second round of Fescue turf fertilization 32-0-5
- Install fall annual flowers
- Tip prune shrubs as needed
- Begin leaf removal
- Begin plant replacements

November

- Complete liquid pre-emergent turf and weed killer application for Bermuda turf
- Complete second round of Fescue turf fertilization 32-0-5
- Complete any plant replacements
- Continue leaf removal
- Finish any final shrub pruning

December

- Leaf removal
- Begin winter cutbacks of roses, grasses, shrubs, etc
- Begin snow preparations

WINTER IS COMING. IS YOUR IRRIGATION SYSTEM READY FOR THE FREEZE?

Experts are saying we can expect a winter with bitter cold temperatures again this year. Don't wait until the last minute to schedule an appointment to have your irrigation system winterized.

Contact Rainmaker today

Email: gina@rainmakerirrigationservices.com

Phone: 919.550.3952



Rainmaker^{INC.}

RESIDENTIAL DESIGN/BUILD

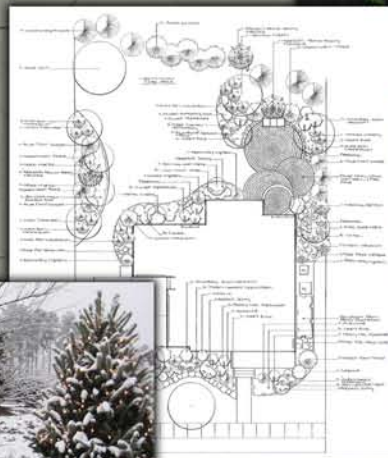
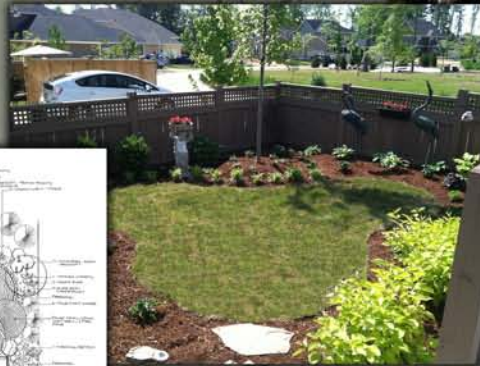
Our residential design/build team is one of the best in the business. Residential Designer James Olson can help you realize what your landscape has been missing, and Project Manager Chris Webster can implement anything James puts on paper. With many years of experience and an eye for detail, this crew can deliver the landscape of your dreams



James J. Olson Jr.
Residential Designer
James.olson@yardnique.com



Chris Webster
Residential Project Manager
chris.webster@yardnique.com



Now is the perfect time of the year to start on your landscaping project. The fall months are a perfect time to start designing and planning your garden or backyard space. It is also a great time to get started on installing any major elements of your landscape. Beat the spring rush and contact us today for all of your residential landscaping needs

Fast Growing Trees to Consider for the Landscape

Your landscape is an investment- with both money and time. Even with the best design, the garden needs time to mature before it starts to really come into its own. This is especially true with the trees. Whether being used for screening, creating shade, or just adding a visual element to the overhead space, trees take many years before you start receiving the full benefits of their use in the landscape. Fortunately for the impatient gardener in all of us, there are a few choices you can use that grow relatively fast. Below is a list of 8 trees that will not leave you waiting around for long:



Japanese Cedar- *Cryptomeria japonica*
Size after 10 years: 16 to 20 feet tall
from a 6-foot-tall sapling
Mature size: Up to 50 feet tall and 10 feet wide



Tulip poplar- *Liriodendron tulipifera*
Size after 10 years: 25 feet tall
from a 6-foot-tall sapling
Mature size: Up to 90 feet tall and 50 feet wide



Black gum- *Nyssa sylvatica*
Size after 10 years: 16 to 20 feet tall
from a 6-foot-tall sapling
Mature size: Up to 50 feet tall and 30 feet wide



Zelkova- *Zelkova serrata*
Size after 10 years: 25 feet tall
from a 6-foot-tall sapling
Mature size: Up to 80 feet tall and 50 feet wide



Chinese Pistache- *Pistachia chinensis*
Size after 10 years: 16 to 20 feet tall
from a 6-foot-tall sapling
Mature size: Up to 35 feet tall and 30 feet wide



Bald Cypress- *Taxodium distichum*
Size after 10 years: 16 to 22 feet tall
from a 6-foot-tall sapling
Mature size: Up to 70 feet tall and 45 feet wide



Redbud- *Cercis canadensis*
Size after 10 years: 16 to 20 feet tall
from a 6-foot-tall sapling
Mature size: Up to 30 feet tall and 35 feet wide



Littleleaf Linden- *Tilia cordata*
Size after 10 years: 18 to 22 feet tall
from a 6-foot-tall sapling
Mature size: Up to 70 feet tall and 50 feet wide